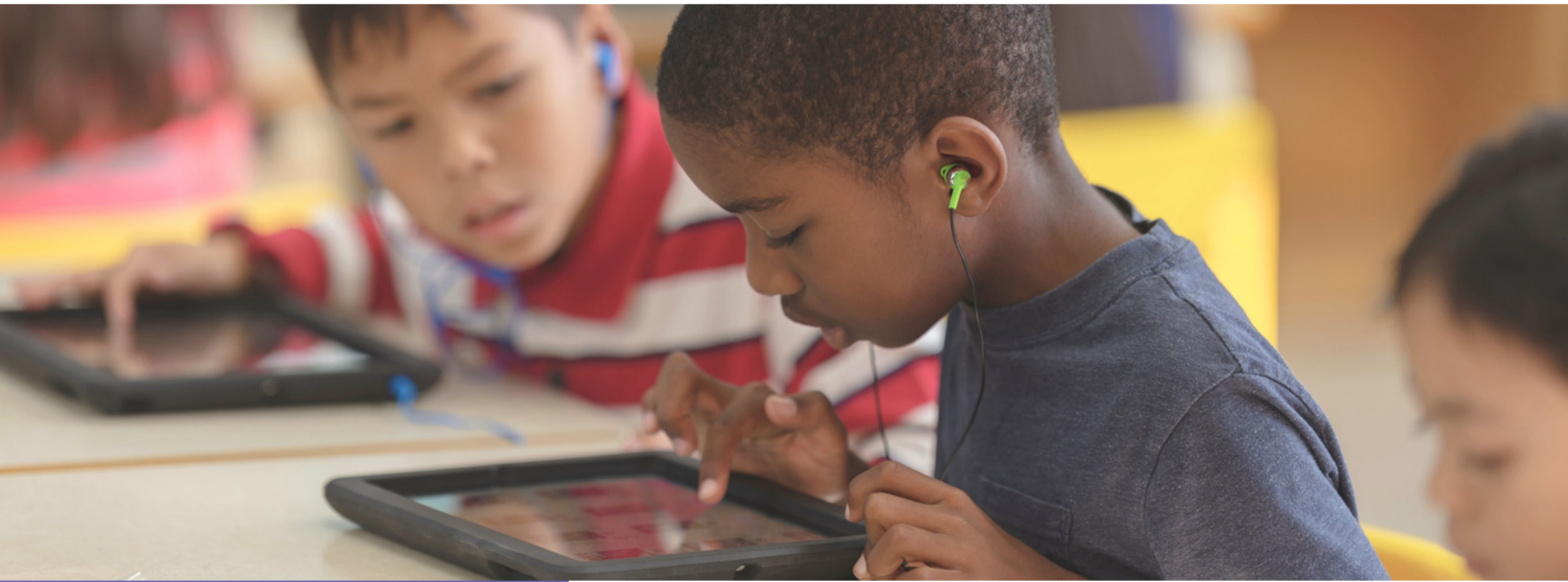


# IKON INSIGHTS

TECHNOLOGY NEWS FOR K-12 SCHOOLS

*Brought to you by IKON Business Group, Inc.*



## IN THIS ISSUE

- **Introducing the IKON EduTech Group**
- **Webinar: How AI Platforms are Impacting K-12 Education**
- **Steps Every School Should Take in Light of the Recent Rochester School District Cyberattack**
- **Jupiter vs. PowerSchool SIS: Which Student Information System is Right for Your School?**

This publication is provided courtesy of IKON Business Group.

IKON is a premium IT consulting company focused on providing K-12 schools with customized technology solutions and personalized support.

*Get More Free Tips, Tools and Services on Our Website:*  
[www.ikonbusinessgroup.com](http://www.ikonbusinessgroup.com)  
(212) 334-6481

## INTRODUCING THE IKON EDUTECH TEAM

IKON is pleased to announce the creation of the IKON EduTech Group. As an IT provider for K-12 schools for over ten years, we recognize that K-12 schools have unique technology needs. Schools need to determine the best software to work with their curriculum stack and how to train staff to take advantage of all the tools available to educate students in the most efficient manner. In addition, hardware has to be integrated to allow for a seamless experience.

The IKON EduTech team will help you find and support solutions in the following areas:

- Instructional technology
- Administrative systems
- Student data and systems
- Classroom design and AV
- School safety
- Professional development training
- School technology planning and budgeting

The IKON EduTech team aims to improve student outcomes, enhance individualized education, and reduce the teaching burden. We have specialized staff that can work with your school to support and implement the best solution for your organization.

Some of the current platforms we support at schools include:

- Power School
- Jupiter
- Google Workspace for Education
- Office 365
- Naviance
- Swift k012
- Modern Classroom
- GoGuardian
- Clever
- Newsela
- EdPuzzle
- Remind
- Kickboard

**To schedule a free 10-minute discovery call to see how we assist with your EdTech concerns, visit [bit.ly/meetwithikon](https://bit.ly/meetwithikon).**

## FREE ON-DEMAND WEBINAR: HOW AI PLATFORMS ARE IMPACTING K-12 EDUCATION



**Artificial Intelligence in schools is quickly becoming an integral part of K-12 education.**

From virtual tutors to automated grading systems, AI platforms are transforming the way students learn and teachers teach in K-12 schools. As AI technology advances, more and more schools are beginning to explore the potential of using AI to improve student learning experiences, enhance school safety, and make teachers and administrative staff more effective in their roles.

*Scan to Watch*



**In this webinar, we'll take a look at how AI platforms are impacting K-12 education and discuss the potential benefits and challenges that come with it, including:**

1. **Real-life examples** of AI technologies currently being used in K-12 education
2. **How AI platforms can personalize learning** for each student and provide instant feedback
3. **How AI can assist teachers** in identifying gaps in student understanding and identify areas of growth in their own teaching practices
4. **The Ethical Implications of AI** in K-12 Education
5. **Potential future advancements** in AI technology for K-12 education

**Watch now at:**

**<https://www.ikonbusinessgroup.com/webinar-ai-in-schools/>**

# STEPS EVERY SCHOOL SHOULD TAKE IN LIGHT OF THE RECENT ROCHESTER SCHOOL DISTRICT CYBERATTACK

Last Monday, the Rochester Public School District in Minnesota was forced to cancel classes due to a massive cybersecurity breach. An immediate investigation was launched after unusual activity was detected on the district's computer network earlier this spring.

"Out of an abundance of caution we shut down our network and almost all of our core technology systems," RPS Superintendent Dr. Kent Pekel remarked in a video statement released by the district.

As hackers become more and more sophisticated, these attacks will only increase – making it imperative that school districts take the necessary precautions to protect their data networks.

Here are some steps you can take to help fortify your network against cyberattacks:

1. **Create unique, strong passwords:** Use complex passwords for all accounts and devices, and avoid reusing them across multiple platforms.
2. **Keep software up-to-date:** Regularly update devices, routers, and software with the latest security patches and firmware updates.
3. **Add an extra layer of security:** Enable multi-factor authentication (MFA) for online accounts and sensitive information.
4. **Protect devices with antivirus software:** Install a trusted antivirus and anti-malware solution to safeguard your devices.
5. **Secure your Wi-Fi network:** Encrypt your Wi-Fi network using a strong password and WPA2 or WPA3 security protocol.
6. **Disable remote access:** Unless absolutely necessary, turn off remote access features on personal devices and routers.
7. **Watch out for phishing attempts:** Exercise caution when clicking links or opening attachments in emails from unknown senders.
8. **Regularly back up data:** Keep copies of important files and data on external storage or secure cloud services.
9. **Use a virtual private network (VPN):** Protect your online activities and data by using a VPN, especially when connected to public Wi-Fi networks.
10. **Stay up-to-date on cybersecurity threats:** Stay informed about the latest news and recommendations from reputable sources to stay aware of potential risks and preventive measures.



**Have questions about cybersecurity or the technology at your school?  
We're here to help.**

# JUPITER VS. POWERSCHOOL SIS: WHICH STUDENT INFORMATION SYSTEM IS RIGHT FOR YOUR SCHOOL?

Student Information Systems (SIS) are crucial tools for K-12 schools to manage student data, streamline administrative tasks, and enhance communication with parents and teachers. Two popular cloud-based SIS solutions in the market today are Jupiter and PowerSchool.

Both solutions offer a variety of features, including student demographics, attendance tracking, grade books, report cards, and parent portals.

Jupiter is known for its user-friendly interface, mobile app, and flexibility for customization while PowerSchool is known for its scalability, integration with other educational software products, and comprehensive data analytics.

## FEATURE COMPARISON

**Attendance Tracking:** Jupiter allows teachers to take attendance through a mobile app, while PowerSchool SIS offers more advanced options, including automated attendance notifications for parents and teachers.

**Gradebook and Report Cards:** Both products offer gradebook and report card features. Jupiter's gradebook is customizable and easy to use, while PowerSchool SIS offers more advanced grading options, including weightings and scales.

**Parent Portal:** Both solutions allow parents to access student data, communicate with teachers, and view grade information. Jupiter's parent portal is known

for its user-friendly interface, while PowerSchool SIS offers more comprehensive features, including automated attendance notifications and progress reports.

**Communication Tools:** Both products offer communication tools for parents and teachers, including messaging systems and teacher collaboration tools. Jupiter offers an easy-to-use interface and mobile app, while PowerSchool SIS offers more advanced communication options, including integration with popular email and messaging services.

## ADVICE FOR SCHOOL LEADERS:

When selecting an SIS software product, school leaders should consider their school's specific needs and budget. Jupiter's user-friendly interface and high degree of customization make it a strong choice for schools that want to tailor their SIS to their specific needs. PowerSchool SIS, on the other hand, offers a range of integrations and a strong focus on data security, which can be particularly important for schools with complex systems or sensitive data. School leaders should also consider the learning curve for new users and the level of customization and data analytics offered by each product.

Ultimately, both Jupiter and PowerSchool SIS are viable options with unique strengths and weaknesses. By carefully evaluating your needs and priorities, you can choose the solution that is best suited to your school's unique situation.

FEATURES	JUPITER	POWERSCHOOL SIS
<b>User-Friendliness</b>	Easy to use with a modern interface	Complex interface that takes time to learn
<b>Customization</b>	Highly customizable with flexible reporting	Customization options are limited
<b>Integration</b>	Integrates well with various third-party systems	Provides integration with some but not all systems
<b>Mobile Access</b>	Mobile app available for both iOS and Android devices	Mobile app available for iOS only
<b>Data Security</b>	256-bit AES encryption with backups and disaster recovery plan	128-bit SSL encryption with nightly backups
<b>Customer Support</b>	Good customer support with email and phone support	Customer support has mixed reviews
<b>Pricing</b>	Pricing starts at \$2,000 per year for up to 500 students	Pricing starts at \$6,000 per year for up to 1,000 students